

Land Adjacent To 118 Woodthorne Road South, Tettenhall, Wolverhampton, WV6 8SW

Land Adjacent To 118 Woodthorne Road South, Tettenhall, Wolverhampton, WV6 8SW

A freehold parcel of land in a prestigious location with planning permission granted for the construction of a detached dormer residence.

LOCATION

The plot stands in a highly regarded residential address which stands within easy reach of the wide ranging local facilities and amenities available within both Tettenhall Village and Tettenhall Wood and within easy reach of a wide range of highly regarded schooling in both sectors.

DESCRIPTION

The plot comprises a broadly level, fenced parcel of land standing in a prime residential location. Planning permission has been granted for the construction of a dormer residence with flexible living accommodation over two floors.

The current planning permission provides for the following accommodation

GROUND FLOOR

Hall
Living room
Dining kitchen
Bedroom
Bathroom

FIRST FLOOR

Bedroom with en-suite shower room
Study / bedroom three

PLANNING DETAILS

Planning permission has been granted by the City of Wolverhampton Council for the erection of one, three bed dormer bungalow.

Planning reference: 20/00467/FUL

Date: 14th January 2021

SERVICES

It is believed that all mains services are available for connection at the site

COUNCIL TAX BAND tbc - Wolverhampton

POSSESSION Vacant possession will be given on completion.

VIEWING Please contact the Tettenhall Office.

Tettenhall Office

01902 747744

tettenhall@berrimaneaton.co.uk

Bridgnorth Office

01746 766499

bridgnorth@berrimaneaton.co.uk

Wombourne Office

01902 326366

wombourne@berrimaneaton.co.uk

Lettings Office

01902 749974

lettings@berrimaneaton.co.uk

Worcestershire Office

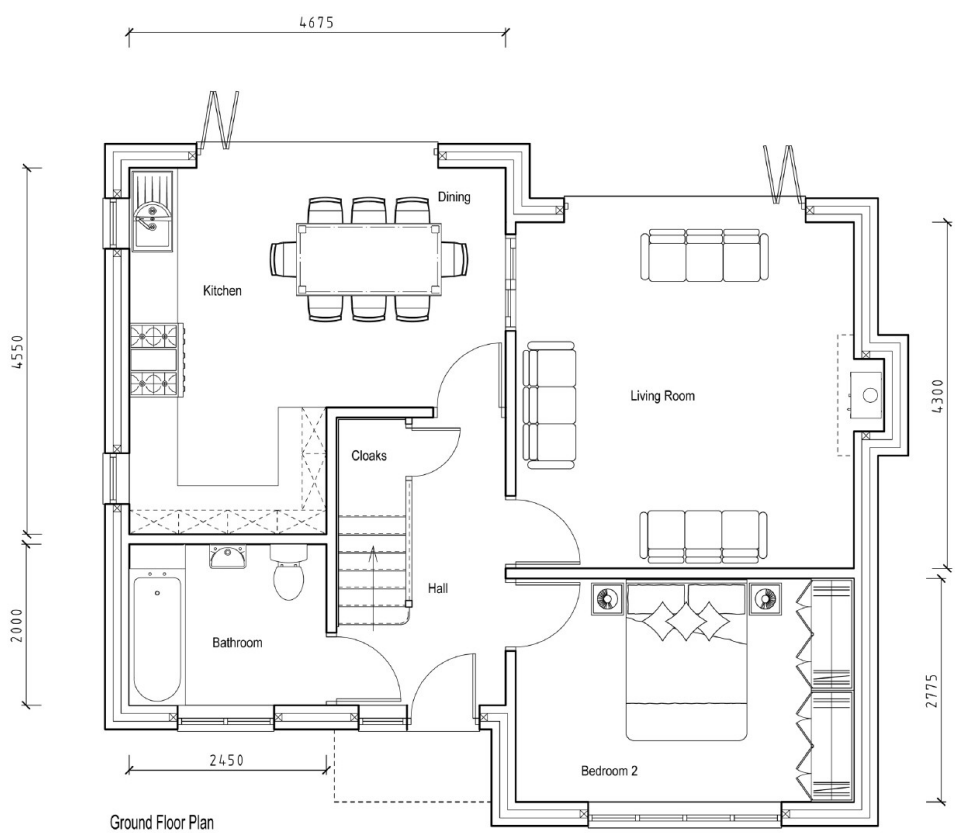
01562 546969

worcestershire@berrimaneaton.co.uk

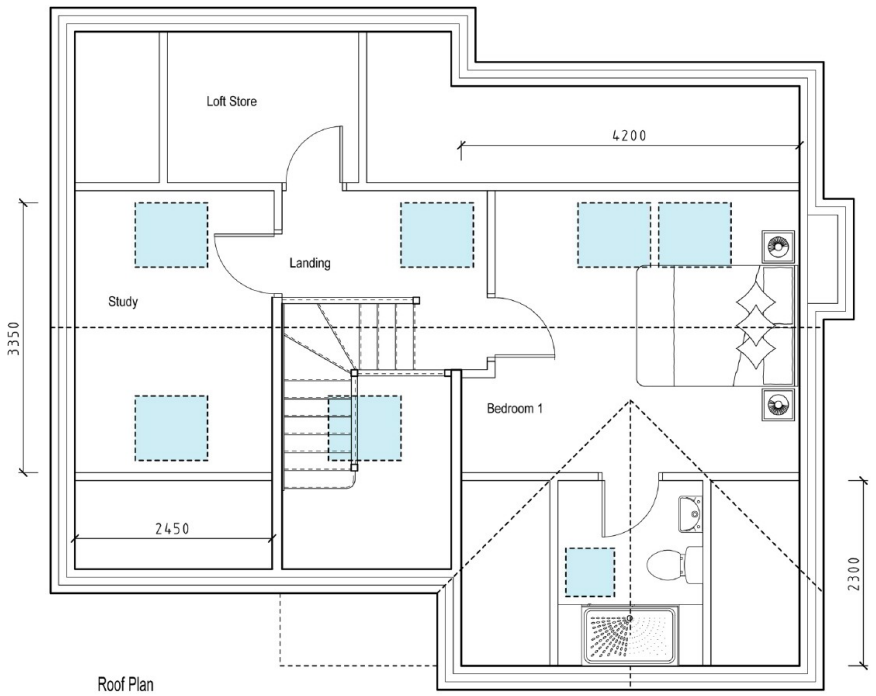
www.berrimaneaton.co.uk

Offers around
£200,000

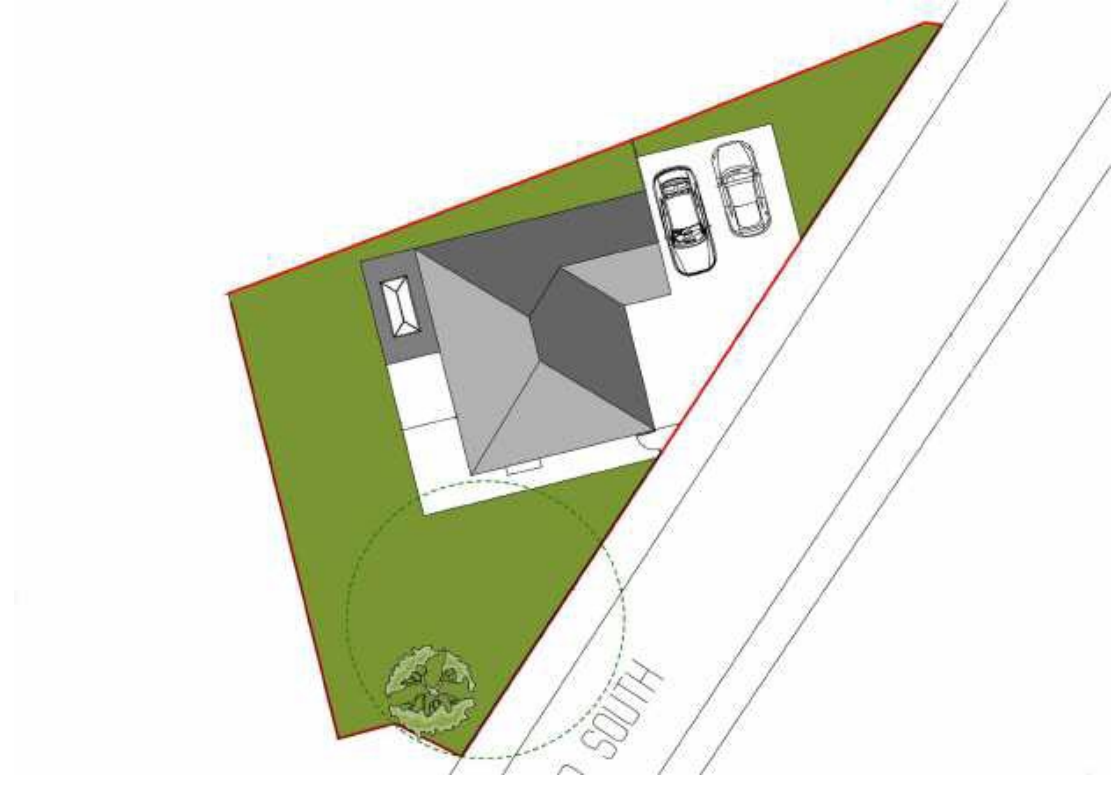
IMPORTANT NOTICE: Every care has been taken with the preparation of these Particulars but they are for general guidance only and complete accuracy cannot be guaranteed. Areas, measurements and distances are approximate and the text, photographs and plans are for guidance only. If there is any point which is of particular importance please contact us to discuss the matter and seek professional verification prior to exchange of contracts.



Ground Floor Plan



Roof Plan





Front Elevation