



Anacapri, Plot 2 Stourbridge Road, Lower Penn, Wolverhampton, WV4 5NF



Anacapri, Plot 2 Stourbridge Road, Lower Penn, Wolverhampton, WV4 5NF

An outstanding development of just six substantial, detached bungalows which are in the course of construction by well know builders of high repute, Messrs Hovi Homes Ltd, which are being constructed to their usual exacting standards in a sought after residential address.

LOCATION

The development at Anacapri is situated within an exclusive area within easy reach of a comprehensive range of local amenities which can be found both along the Penn Road and in the nearby village of Wombourne with its traditional, picturesque village centre set around a cricket green.

The city centre of Wolverhampton is within a few minutes' drive and regular bus services run along the length of the Penn Road.

DESCRIPTION

The development comprises well thought out scheme of just six, substantial detached single storey residences which are being built to a high standard with an outstanding specification to all of the properties. Each bungalow has a fine flow of living areas with versatile accommodation which can be adapted to suit individual buyers own needs.

The site sits on a gently graded plot benefiting from a high degree of privacy with all of the properties benefiting from excellent rear gardens, pleasant frontages and driveways affording ample off street parking together with a garage.

Each house will benefit from double glazed windows, fully fitted kitchens by well known specialist Dayrooms of Tettenhall with an induction hob with single oven, extraction fan, integrated fridge freezer and plumbing for a washing machine, gas fired combination boilers and chrome towel rail radiators to the en-suite shower rooms and bathrooms. There will be luxuriously appointed bathrooms by Utopia and neutral décor to all of the residences.

SERVICES

We are informed by the Vendors that all main services are installed.

COUNCIL TAX

BAND tbc - South Staffordshire DC.

POSSESSION

Vacant possession will be given on completion.

VIEWING

Please contact the Wombourne office.

**13/15 High Street
Tettenhall
Wolverhampton
WV6 8QS
01902 747744**

tettenhall@berrimaneaton.co.uk

**22/23 Whitburn Street
Bridgnorth
Shropshire
WV16 4QN
01746 766499**

bridgnorth@berrimaneaton.co.uk

**High Street
Wombourne
Wolverhampton
WV5 9DP
01902 326366**

wombourne@berrimaneaton.co.uk

www.berrimaneaton.co.uk

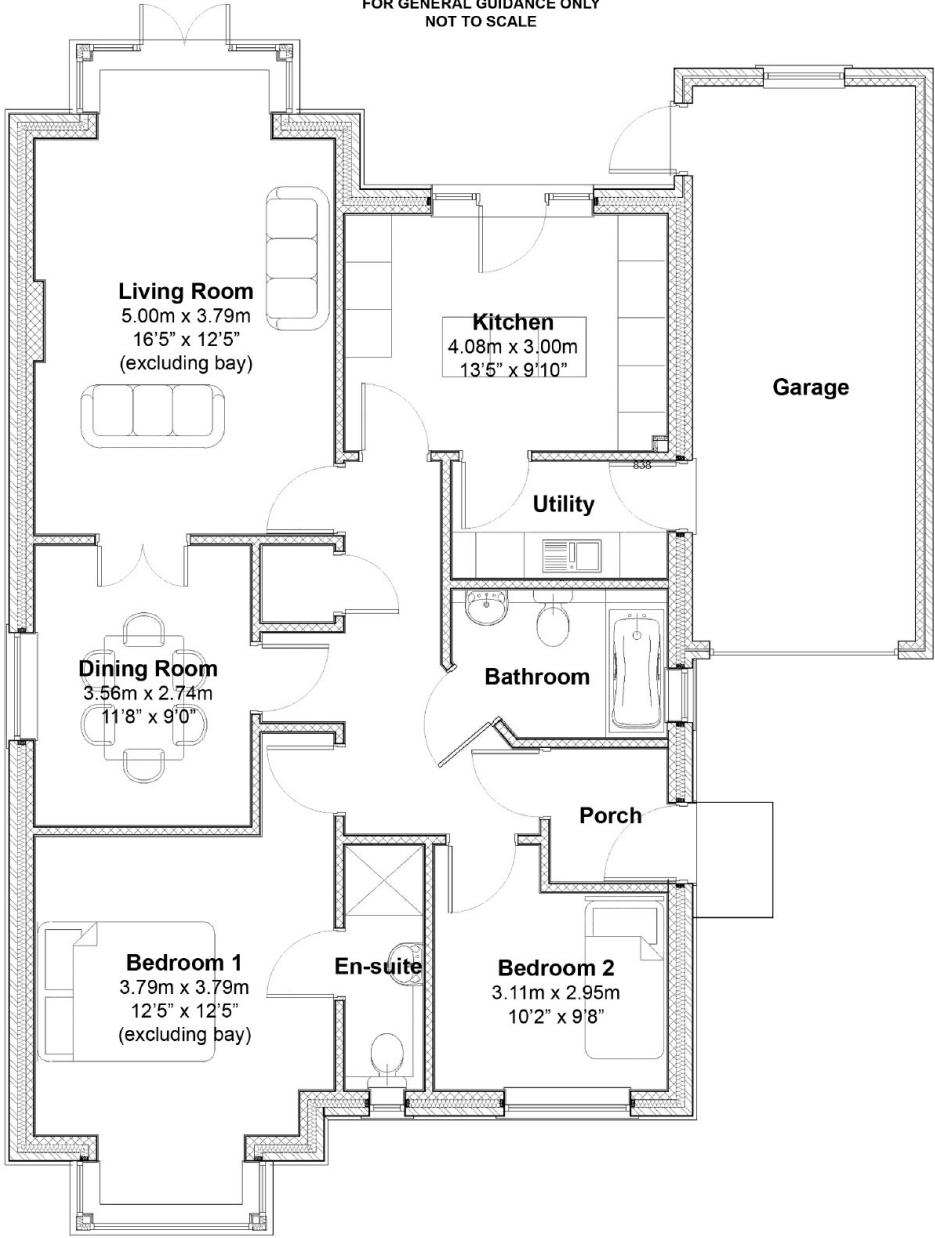
Price
£375,000

IMPORTANT NOTICE: Every care has been taken with the preparation of these Particulars but they are for general guidance only and complete accuracy cannot be guaranteed. Areas, measurements and distances are approximate and the text, photographs and plans are for guidance only. If there is any point which is of particular importance please contact us to discuss the matter and seek professional verification prior to exchange of contracts.

**ANACAPRI
PROPERTY TYPE "A"
PLOT 2, PLOT 6 (handed)
STOURBRIDGE ROAD
LOWER PENN**

**PLANS/DIMENSIONS PROVIDED
FROM ARCHITECT**

**FOR GENERAL GUIDANCE ONLY
NOT TO SCALE**



The Willows

White Bays

Plot 6 (No.6)

Plot 5 (No.5)

Plot 4 (No.4)

Plot 3 (No.3)

Plot 2 (No.2)

Plot 1 (No.1)

The Bungalow

LLOYD HILL

STOURBRIDGE ROAD

